

EXHIBIT F

Washington has a new election system

In each race for partisan office, the two candidates who received the most votes in the August Primary advance to the November General Election.

Each candidate for partisan office may state a political party that he or she prefers. A candidate's preference does not imply that the candidate is nominated or endorsed by the party, or that the party approves of or associates with that candidate.

The election for President and Vice-President is different. Candidates for President and Vice President are the official nominees of their party.

Typ:01 Seq:0001 Spl:01		B		C	
<div>11</div> <div>21</div> <div>40</div> <div>41</div> <div>42</div> <div>43</div> <div>51</div>					
<div>OFFICIAL BALLOT GENERAL ELECTION JEFFERSON COUNTY, STATE OF WASHINGTON TUESDAY, NOVEMBER 4, 2008</div> <div>IMPORTANT VOTING INSTRUCTIONS - PLEASE USE BLACK INK</div> <div>VOTE FOR ONLY ONE CANDIDATE IN EACH RACE</div> <div>Blacken the oval beside the name of your choice, like this (<input checked="" type="radio"/>). If you wish to vote for a candidate not printed on the ballot, write the name of the candidate in the space provided and blacken the oval next to the write-in line. IF YOU MAKE A MISTAKE: Draw a line through your incorrect choice like this: George Washington. You then have the option of making another choice if you wish. Unless specifically allowed by law, more than one vote for an office or ballot measure will be an overvote and no votes for that office or ballot measure will be counted. If a voter has signed or otherwise identified himself or herself on a ballot, the ballot will not be counted.</div>					
Proposed By Initiative Petition		Local Measure		Federal - Partisan Offices	
<div>INITIATIVE MEASURE NO. 985</div> <div>Initiative Measure No. 985 concerns transportation.</div> <div>This measure would open high-occupancy vehicle lanes to all traffic during specified hours, require traffic light synchronization, increase roadside assistance funding, and dedicate certain taxes, fines, tolls and other revenues to traffic-flow purposes.</div> <div>Should this measure be enacted into law?</div> <div><input type="radio"/> Yes</div> <div><input type="radio"/> No</div>		<div>JEFFERSON COUNTY Proposition No. 1 Local Power Authorization</div> <div>Shall Public Utility District No. 1 of Jefferson County construct or acquire electric facilities for the generation, transmission or distribution of electric power?</div> <div><input type="radio"/> Yes</div> <div><input type="radio"/> No</div>		<div>READ: Each candidate for President and Vice-President is the official nominee of a political party. For other partisan offices, each candidate may state a political party that he or she prefers. A candidate's preference does not imply that the candidate is nominated or endorsed by the party, or that the party approves of or associates with that candidate.</div> <div>United States Representative 6th Congressional District 2 Year Term Vote for one</div> <div><input type="radio"/> Norm Dicks (Prefers Democratic Party)</div> <div><input type="radio"/> Doug Cloud (Prefers Republican Party)</div> <div><input type="radio"/> Write-In</div>	
<div>INITIATIVE MEASURE NO. 1000</div> <div>Initiative Measure No. 1000 concerns allowing certain terminally ill competent adults to obtain lethal prescriptions.</div> <div>This measure would permit terminally ill, competent, adult Washington residents, who are medically predicted to have six months or less to live, to request and self-administer lethal medication prescribed by a physician.</div> <div>Should this measure be enacted into law?</div> <div><input type="radio"/> Yes</div> <div><input type="radio"/> No</div>		<div>President / Vice-President of the United States 4 Year Term Vote for one</div> <div><input type="radio"/> Barack Obama / Joe Biden Democratic Party Nominees</div> <div><input type="radio"/> John McCain / Sarah Palin Republican Party Nominees</div> <div><input type="radio"/> Ralph Nader / Matt Gonzalez Independent Candidates</div> <div><input type="radio"/> Gloria La Riva / Eugene Puryear Socialism & Liberation Party Nominees</div> <div><input type="radio"/> James E. Harris / Alyson Kennedy Socialist Workers Party Nominees</div> <div><input type="radio"/> Bob Barr / Wayne A. Root Libertarian Party Nominees</div> <div><input type="radio"/> Chuck Baldwin / Darrell L. Castle Constitution Party Nominees</div> <div><input type="radio"/> Cynthia McKinney / Rosa Clemente Green Party Nominees</div> <div><input type="radio"/> Write-in</div>		<div>State - Partisan Offices</div> <div>Governor 4 Year Term Vote for one</div> <div><input type="radio"/> Christine Gregoire (Prefers Democratic Party)</div> <div><input type="radio"/> Dino Rossi (Prefers G.O.P. Party)</div> <div><input type="radio"/> Write-in</div> <div>Lieutenant Governor 4 Year Term Vote for one</div> <div><input type="radio"/> Brad Owen (Prefers Democratic Party)</div> <div><input type="radio"/> Marcia McCraw (Prefers Republican Party)</div> <div><input type="radio"/> Write-in</div> <div>Secretary of State 4 Year Term Vote for one</div> <div><input type="radio"/> Sam Reed (Prefers Republican Party)</div> <div><input type="radio"/> Jason Osgood (Prefers Democratic Party)</div> <div><input type="radio"/> Write-in</div> <div>State Treasurer 4 Year Term Vote for one</div> <div><input type="radio"/> Allan Martin (Prefers Republican Party)</div> <div><input type="radio"/> Jim McIntire (Prefers Democratic Party)</div> <div><input type="radio"/> Write-in</div>	
<div>INITIATIVE MEASURE NO. 1029</div> <div>Initiative Measure No.1029 concerns long-term care services for the elderly and persons with disabilities.</div> <div>This measure would require long-term care workers to be certified as home care aids based on an examination, with exceptions; increase training and criminal background check requirements; and establish disciplinary standards and procedures.</div> <div>Should this measure be enacted into law?</div> <div><input type="radio"/> Yes</div> <div><input type="radio"/> No</div>		<div>TURN OVER TO CONTINUE VOTING</div>			
A		B		C	
Typ:01 Seq:0001 Spl:01		Typ:01 Seq:0001 Spl:01			

D	E	F
State - Partisan Offices		
County - Partisan Offices		
State Auditor 4 Year Term Vote for one <input type="radio"/> Brian Sonntag (Prefers Democratic Party) <input type="radio"/> J. Richard (Dick) McEntee (Prefers Republican Party) <input type="radio"/> Write-in	County Commissioner Dist. No. 1 4 Year Term Vote for one <input type="radio"/> Phil Johnson (Prefers Democratic Party) <input type="radio"/> Dennis A. Schultz (Prefers Republican Party) <input type="radio"/> Write-in	
Attorney General 4 Year Term Vote for one <input type="radio"/> Rob McKenna (Prefers Republican Party) <input type="radio"/> John Ladenburg (Prefers Democratic Party) <input type="radio"/> Write-in	County Commissioner Dist. No. 2 4 Year Term Vote for one <input type="radio"/> David W. Sullivan (Prefers Democratic Party) <input type="radio"/> Sandy Hershelman (Prefers Independent/No Party) <input type="radio"/> Write-in	
Commissioner of Public Lands 4 Year Term Vote for one <input type="radio"/> Doug Sutherland (Prefers Republican Party) <input type="radio"/> Peter J. Goldmark (Prefers Democratic Party) <input type="radio"/> Write-in	Judicial - Nonpartisan Offices	
State - Nonpartisan Office	State Supreme Court Justice Pos. No. 3 6 Year Term Vote for one <input type="radio"/> Mary Fairhurst <input type="radio"/> Write-in	
Superintendent of Public Instruction 4 Year Term Vote for one <input type="radio"/> Teresa (Terry) Bergeson <input type="radio"/> Randy Dorn <input type="radio"/> Write-in	State Supreme Court Justice Pos. No. 4 6 Year Term Vote for one <input type="radio"/> Charles W. Johnson <input type="radio"/> Write-in	
State - Partisan Office	State Supreme Court Justice Pos. No. 7 Short & 6 Year Term Vote for one <input type="radio"/> Debra L. Stephens <input type="radio"/> Write-in	
Insurance Commissioner 4 Year Term Vote for one <input type="radio"/> Mike Kreidler (Prefers Democratic Party) <input type="radio"/> John R. Adams (Prefers Republican Party) <input type="radio"/> Write-in	Court of Appeals Div. 2, Dist. 2, Pos. No. 1 6 Year Term Vote for one <input type="radio"/> (Joyce) Robin Hunt <input type="radio"/> Write-in	
Legislative District 24 - Partisan Offices	Superior Court Judge Pos. No. 1 4 Year Term Vote for one <input type="radio"/> Craddock Verser <input type="radio"/> Write-in	
State Senator 4 Year Term Vote for one <input type="radio"/> Jim Hargrove (Prefers Democratic Party) <input type="radio"/> Write-in	Local - Nonpartisan Office	
State Representative Pos. No. 1 2 Year Term Vote for one <input type="radio"/> Kevin Van De Wege (Prefers Democratic Party) <input type="radio"/> Thomas Thomas (Prefers G.O.P. Party) <input type="radio"/> Write-in	Public Utility Dist. No. 1 Commissioner Dist. No. 2 6 Year Term Vote for one <input type="radio"/> Ken McMillen <input type="radio"/> Jim Pivarnik <input type="radio"/> Write-in	
State Representative Pos. No. 2 2 Year Term Vote for one <input type="radio"/> Lynn Kessler (Prefers Democratic Party) <input type="radio"/> Robert (Randy) Dutton (Prefers Republican Party) <input type="radio"/> Write-in		
	TURN OVER TO CONTINUE VOTING	
		Typ:01 Seq:0001 Spl:01

EXHIBIT G

Washington has a new Primary!

You do not have to pick a party. In each race, you may vote for any candidate listed. The two candidates who receive the most votes in the August Primary will advance to the November General Election.

Each candidate for partisan office may state a political party that he or she prefers. A candidate's preference does not imply that the candidate is nominated or endorsed by the party, or that the party approves of or associates with that candidate.

VOTING INSTRUCTIONS
CLARK COUNTY, WASHINGTON
AUGUST 18, 2009 PRIMARY AND SPECIAL ELECTION

MAKE SURE YOUR VOTE IS COUNTED.

Before you begin voting, please read all of the voting instructions printed on your ballot, those printed below and the instructions printed on the other materials included in your ballot packet. By understanding the voting instructions thoroughly you will make sure your vote is counted.

VOTING INSTRUCTIONS:

- 1) Vote your ballot in secret and do not show it to anyone.
- 2) Use a black or blue ink pen to mark your ballot by completely filling in the box to the left of your choice(s) like this: (☒)
- 3) Vote for only one choice for each office or ballot measure. Unless specifically allowed by law, more than one vote for an office or ballot measure will be an overvote and no votes for that office or ballot measure will be counted.
- 4) To vote for a person not appearing on the ballot, write the person's name on the blank line provided and completely fill in the box to the left of the word "Write-in." Write-in votes cast for partisan offices should include the candidate's party preference, if known.
- 5) If your ballot is destroyed, lost or spoiled you may request a replacement ballot by calling the Elections Department at (360) 397-2345 or by e-mailing a request to the Elections Department at: elections@clark.wa.gov. **The Clark County Elections Department is the only location where you can request a ballot. Replacement ballots will not be available at the ballot deposit locations on election day.**
- 6) If you make a mistake when voting, you may correct it using the instructions below. *(Please ignore any other instructions which might be printed on the yellow secrecy envelope explaining how to correct a voting mistake. Those instructions have been replaced by these below.)*

To Correct a Mistake:
 Draw a line through the entire candidate's name as shown below. You then have the option of voting another choice.

Office	
<input checked="" type="checkbox"/>	Candidate #1
<input checked="" type="checkbox"/>	Candidate #2
<input type="checkbox"/>	Write - In

- 7) After voting, review your choice(s) to be sure you marked the ballot the way you intended.
- 8) Refold your voted ballot and place it in the yellow secrecy envelope. Place the sealed yellow secrecy envelope containing your voted ballot into the affidavit envelope with the green stripes along the edges.
- 9) Read the *Affidavit of Voter* oath on the return envelope with the green stripes, then sign the affidavit oath and date it on the lines provided. **YOUR BALLOT WILL NOT BE COUNTED IF YOU DO NOT SIGN THE OATH ON THE AFFIDAVIT OF VOTER ENVELOPE.**
- 10) If you are unable to sign your name, you can make a mark where your signature should go and have it witnessed by two other people who must sign the affidavit envelope in the spaces provided. Please read and follow the instructions printed on the affidavit envelope next to the spaces provided for two witnesses to sign.

(over)

- 12) If you choose not to mail your ballot, you may take it to one of the ballot deposit locations listed below before 8:00 PM, election day. The ballot deposit locations will be staffed by election workers and will be open from 7 AM until 8 PM, on Election Day, Tuesday, November 3, 2009 only.
- 13) You can also bring your voted ballot to the County Elections Department, located at 1408 Franklin Street, Vancouver, before election day. We are open from 8 AM to 5 PM, Monday through Friday. Located one-half block east of the County Elections Department, in the middle of 14th Street, is a large red ballot drop box which is available twenty-four hours a day beginning on October 14 and available up until 8 PM election day.
- 14) Any voter who is unable to vote their ballot due to disability or who wishes to vote their ballot without assistance should contact the County Elections Department by calling the regular telephone number of 360-397-2345 or by using the Speech to Speech Relay number (800) 833-6384. Special accessible voting equipment is available at the County Elections Department.

ADDITIONAL IMPORTANT INFORMATION:

If you have any difficulty voting your ballot, or have any other questions, please contact the County Elections Department by calling (360) 397-2345 or by using our e-mail address at: elections@clark.wa.gov

BALLOT DEPOSIT LOCATIONS – November 3, 2009 General Election

For voters who wish to return their voted ballot in person, the following locations will have election workers present to accept completed ballots on **election day only, Tuesday, November 3, 2009**. The ballot deposit locations will be open from 7 AM until 8 PM. The County Elections Department, 1408 Franklin Street, Vancouver, will also be open from 7 AM until 8 PM election day to accept voted ballots. If a voter wishes to return their voted ballot in person before election day, the County Elections Department will be open from 8 AM to 5 PM, Monday through Friday to accept ballots. Located one-half block east of the County Elections Department on West 14th Street is a red ballot drop box which is available twenty-four hours a day to accept ballots up until 8 PM election day. **Ballots must be received at all deposit locations before 8:00 PM, election day. Any ballot received at a deposit location after 8:00 PM election day will not be valid.**

1. County Elections Department	1408 Franklin Street, Vancouver
2. Permanent Ballot Drop Box – (available 24 hours a day)	W 14 th & Esther Streets, Vancouver
3. Battle Ground City Hall	109 SW 1 st Street, Battle Ground
4. Battle Ground High School	300 W Main Street, Battle Ground
5. Burton Elementary School	14015 NE 28 th Street, Vancouver
6. Chinook Elementary School	1900 NW Bliss Road, Vancouver
7. Crestline Elementary School	13003 SE 7 th Street, Vancouver
8. Dorothy Fox Elementary School	2623 NW Sierra Street, Camas
9. Eleanor Roosevelt Elementary School	2921 Falk Road, Vancouver
10. Felida Elementary School	2700 NW 119 th Street, Vancouver
11. Fisher's Landing Elementary School	3800 SE Hiddenbrook Drive, Vancouver
12. Glenwood Heights Primary School	9716 NE 134 th Street, Vancouver
13. Grace Foursquare Gospel Church	717 SE Everett Road, Camas
14. Hazel Dell Elementary School	511 NE Anderson Road, Vancouver
15. Helen Baller Elementary School	1954 NE Garfield Street, Camas
16. Hockinson Middle School	15916 NE 182 nd Avenue, Brush Prairie
17. Image Elementary School	4400 NE 122 nd Avenue, Vancouver
18. La Center Community Center	1000 E 4 th Street, La Center
19. Lieser Early Childhood Center	301 S Lieser Road, Vancouver
20. Lincoln Elementary School	4200 Daniels Street, Vancouver
21. M.L. King Elementary School	4801 Idaho Street, Vancouver
22. Mill Plain Elementary School	400 SE 164 th Avenue, Vancouver
23. Minnehaha Elementary School	2800 NE 54 th Street, Vancouver
24. Pleasant Valley School	14320 NE 50 th Avenue, Vancouver
25. Prune Hill Elementary School	1601 NW Tidland Street, Camas
26. Ridgefield Nazarene Church	747 Pioneer Avenue, Ridgefield
27. Riverview Elementary School	12601 SE Riveridge Drive, Vancouver
28. Salmon Creek Elementary School	1601 NE 129 th Street, Vancouver
29. Sarah J. Anderson Elementary School	2215 NE 104 th Street, Vancouver
30. Sifton Elementary School	7301 NE 137 th Avenue, Vancouver
31. Sunset Elementary School	9001 NE 95 th Street, Vancouver
32. Vancouver School of Arts and Academics	3101 Main Street, Vancouver
33. Walnut Grove Elementary School	6103 NE 72 nd Avenue, Vancouver
34. Washougal Community Center	1681 C Street, Washougal
35. Yacolt Primary School	406 W Yacolt Road, Yacolt

OFFICIAL BALLOT
CLARK COUNTY, WASHINGTON
PRIMARY AND SPECIAL ELECTION

August 18, 2009

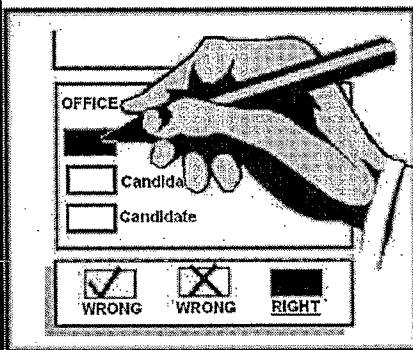
Precinct **0606**

Voting Instructions:

MAKE SURE YOUR VOTE COUNTS by reading the voting instructions below and those printed on the other materials in your ballot packet.

VOTING INSTRUCTIONS:

- 1) Your ballot must be voted in secret and shown to no one.
- 2) Use a black or blue ink pen to mark your ballot by completely filling in the box to the left of your choice.
- 3) VOTE FOR ONLY ONE CHOICE FOR EACH OFFICE OR BALLOT MEASURE. Unless specifically allowed by law, more than one vote for an office or ballot measure will be an overvote and no votes for that office or ballot measure will be counted.
- 4) To vote for a person not appearing on the ballot, completely fill in the box to the left of the "Write-in" choice and use the line provided for their name. Write-in votes cast for partisan offices should include the candidate's party preference, if known.
- 5) IF YOU MAKE A MISTAKE WHEN VOTING, completely cross out the name of the candidate or choice you do not want. You then have the option of making another choice.



READ: Each candidate for partisan office may state a political party that he or she prefers. A candidate's preference does not imply that the candidate is nominated or endorsed by the party, or that the party approves of or associates with that candidate.

**STATE LEGISLATIVE
PARTISAN OFFICE**

**STATE REPRESENTATIVE
15TH LEGISLATIVE DISTRICT
POSITION NO. 2**

Unexpired One Year Term
Vote For One

- ☐ Donicio Marichalar
(Prefers Democratic Party)
- ☐ David Taylor
(Prefers Republican Party)
- ☐ John (Jobs) Gotts
(Prefers Democratic Party)
- ☐ Write-in

LOCAL MEASURES

**CLARK COUNTY
EMERGENCY MEDICAL SERVICE
DISTRICT # 1**

**PROPOSITION NO. 1
TEN-YEAR LEVY FOR EMERGENCY
MEDICAL SERVICES**

Shall Clark County Emergency Medical Service District #1 (North Country Emergency Medical Service) be authorized to impose regular property tax levies of 50 cents or less per thousand dollars of assessed valuation for each of ten consecutive years, collection to begin in 2010?

- ☐ YES
- ☐ NO



10000570200033

000000002326



This page intentionally left blank

3643031135

