

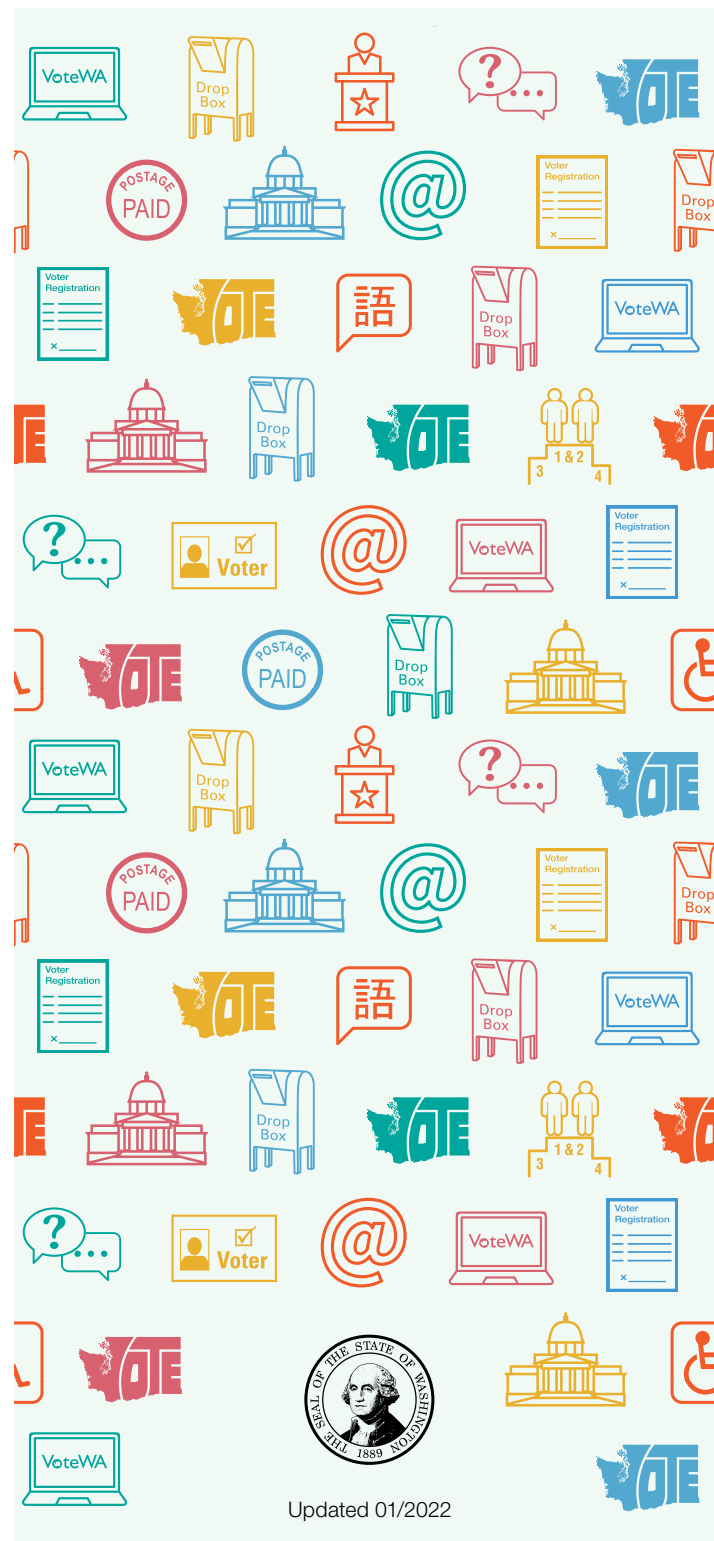


Do you have questions or ideas  
on how we can improve our  
services to your community?

### Contact us!

Washington Secretary of State  
Elections Division  
520 Union Ave SE  
Olympia, WA 98504

1 (800) 448-4881  
[sos.wa.gov/elections](https://sos.wa.gov/elections)



Updated 01/2022

English

# Voting in Washington State

*"The vote starts with you!"*



Office of the  
Secretary of State  
Elections Division

# Important Dates

## 2022 Elections

Visit [sos.wa.gov/elections](https://sos.wa.gov/elections) for more details.

Feb  
8

Special  
Election

Apr  
26

Special  
Election

Aug  
2

State  
Primary

Nov  
8

General  
Election

## We make it simple and secure.

### Voting for the first time in Washington?

Welcome to Washington! Register or update your information online at [VoteWA.gov](https://VoteWA.gov), by mail, in person, or when you get your new state driver license or ID at the Department of Licensing.

You may not vote in multiple states. Be sure to cancel any previous voter registration before you register in Washington. You do not have to declare a party affiliation when you register to vote.



## Voting Step-by-Step




### Qualifications

You must be at least 18 years old, a U.S. citizen, and a resident of Washington, and not in total confinement for a felony conviction in Washington or currently incarcerated for a federal or out-of-state felony conviction.

### Register to vote

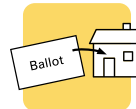
You can register online at [VoteWA.gov](https://VoteWA.gov), by mail, or in person at your local elections office.

 If you are 16 or 17, you can sign up as a Future Voter and be automatically registered to vote when you qualify.



### Receive Voters' Pamphlet

Mailed to every household in Washington state for the General Election, use this tool to make informed decisions on candidates and measures. It should arrive before your ballot. View your personalized Online Voters' Guide at [VoteWA.gov](https://VoteWA.gov).



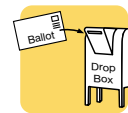
### Check your mailbox

Your ballot will be sent out 18 days before election day. Military and overseas ballots are sent 45 days before election day. Accessible Voting Units (AVUs) are available at county voting centers.




### Vote your ballot

Vote your ballot and sign your return envelope. You are not required to vote every race on your ballot.



### Vote by mail

Prepaid postage included! Mail your ballot back to your county elections office postmarked on time or drop it into a local drop box no later than 8 p.m. on election day. Find a list of drop boxes and voting centers at [VoteWA.gov](https://VoteWA.gov).

 If you cannot personally return your ballot, let only people you trust deliver it for you.

### Check the status of your ballot

Check the status of your ballot on [VoteWA.gov](https://VoteWA.gov) to see if it has been received by your county elections office.



Election staff will contact you before your ballot is processed if:

- Your signature is missing
- Your signature doesn't match your voter registration record